

Set camera IP address

Aim

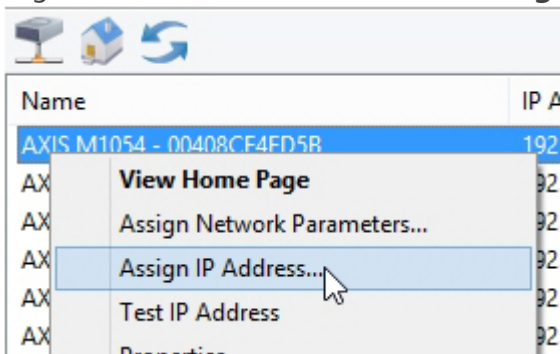
To set the IP address of the camera to the same range as the Ethernet card and the computer.

Prerequisites

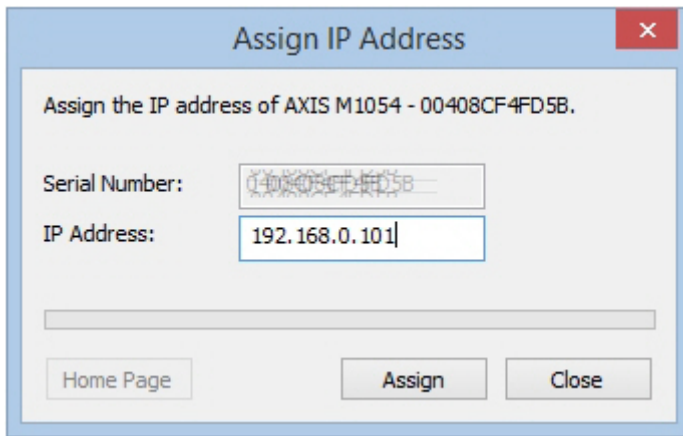
- You have Axis IP cameras that are supported with MediaRecorder.
See [Supported IP cameras](#) in [Recording devices](#)
- You installed the Ethernet card.
See [Install the Ethernet card](#)
- You gave the card a fixed IP address.
See [Set Ethernet card IP address](#)
- You connected all cameras.

Procedure

1. Insert the MediaRecorder installation USB stick into your computer and copy the file **IPUtility.exe** from the folder Drivers and Tools\Software\Axis Tools to your computer. Do not copy it to your desktop, the tool will then not work correctly.
2. Run **IPUtility.exe**. A window opens in which all the connected devices are listed.
3. Right-click the device and select **Assign IP address**.



4. Enter the IP address and choose **Assign**.

A screenshot of a software dialog box titled "Assign IP Address" with a red close button in the top right corner. The dialog contains the instruction "Assign the IP address of AXIS M1054 - 00408CF4FD5B." Below this, there are two input fields: "Serial Number:" with the value "00408CF4FD5B" and "IP Address:" with the value "192.168.0.101". At the bottom, there are three buttons: "Home Page", "Assign", and "Close".

Assign IP Address

Assign the IP address of AXIS M1054 - 00408CF4FD5B.

Serial Number: 00408CF4FD5B

IP Address: 192.168.0.101

Home Page Assign Close

5. According to the message that appears, disconnect and reconnect the camera and click **Assign**. Wait until the IP address is set.
6. Right-click the camera and select **Test IP address**. When the details were entered correctly a message appears that the camera is accessible.
7. Repeat steps 3 to 6 for all cameras. Make sure you use different IP addresses for all cameras and computer and other network devices in the network.

Revision #5

Created 1 December 2023 09:39:47

Updated 20 December 2023 13:47:08