

# Set camera IP address

## Aim

To make sure that the IP address of the GigE camera and that Ethernet interface board physically connected to that camera match. This ensures reliable data transfer to and from the camera.

## Prerequisites

- You followed the procedure in [Ethernet card setup](#)
- You connected the camera. This is the same procedure as connecting an IP camera.  
See [Connect IP cameras to the PC](#) in [Set up IP cameras](#)

## Procedure

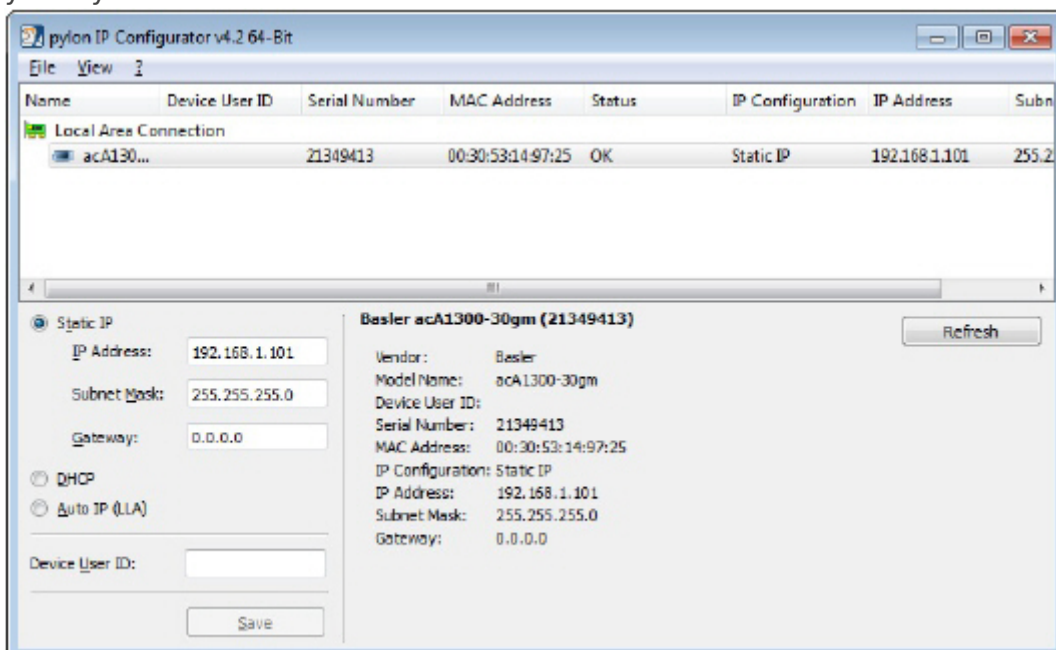
1. Double-click the **Pylon IP Configuration tool** icon on the desktop.



2. Select the camera under **Local Area Connection**.



3. Fill in the **IP Address** and **Subnet Mask** fields under **Static IP Address** as supplied by your system administrator.



- 4. Click **Save** and then **Close**.
- 5. If you have multiple cameras, connect the next one and repeat the steps above.

## Note

Your cameras should have the same Firmware version. Check this in the Pylon Viewer software. In the **Features** panel, under **Device Information**, check **Firmware Version**. If the cameras do not have the same firmware, an upgrade/downgrade must be done.

Device Information	
Vendor Name	Basler
Model Name	acA1300-60gm
Manufacturer Info	none
Device Version	106200-06
Firmware Version	106200-06;U;acA1300_60g;V3.14-0;0
Device ID	21432664

Revision #8  
Created 1 December 2023 10:35:53  
Updated 2 January 2024 21:33:12