

# See which preview image comes from which camera

## Aim

To see which image comes from which camera.

## Prerequisite

You selected the recording devices in the **Video Settings** window.

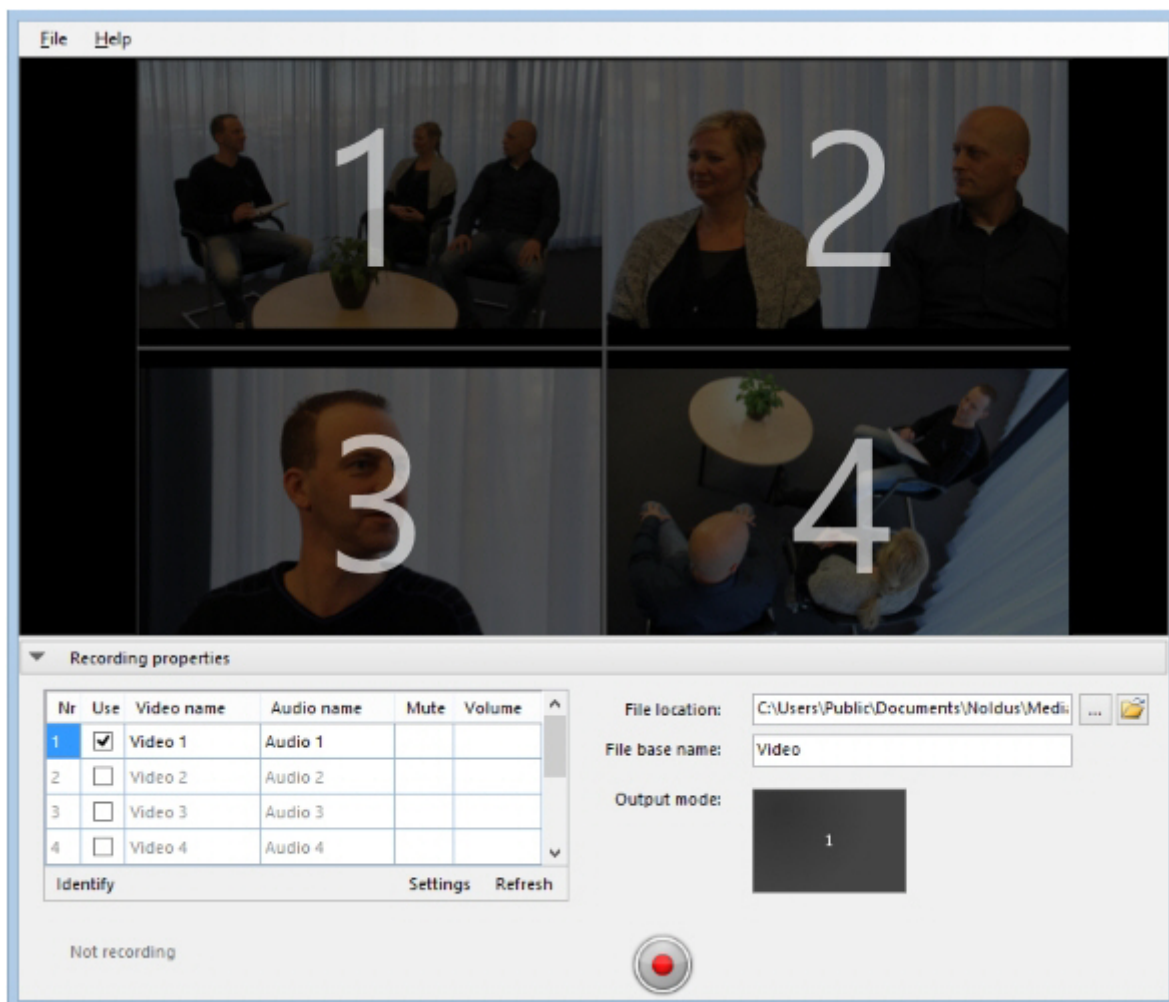
See [Select a video device](#)

## Procedure

Press the **Identify** button.

Nr	Use	Video name	Audio name
1	<input checked="" type="checkbox"/>	Video 1	Audio 1
2	<input checked="" type="checkbox"/>	Video 2	Audio 2
3	<input checked="" type="checkbox"/>	Video 3	Audio 3
4	<input type="checkbox"/>	Video 4	Audio 4
Identify			

Result — Numbers are superimposed on the camera images. These correspond to the row numbers in the table.



Revision #5

Created 29 November 2023 21:41:56

Updated 20 December 2023 12:47:08