

Create The Observer XT settings

Aim

To enable communication between The Observer XT and N-Linx Server.

Prerequisites

- You installed N-Linx Server on a computer in the network.
- If MediaRecorder and The Observer XT, or N-Linx Server run on different computers, you created exceptions for the port that N-Linx uses in Windows Firewall.
See [Create exceptions for N-Linx port in Windows Firewall](#)
- N-Linx Agent is installed on the computer with MediaRecorder and connected to N-Linx Server.
See [Install N-Linx Agent](#)
- MediaRecorder is open.

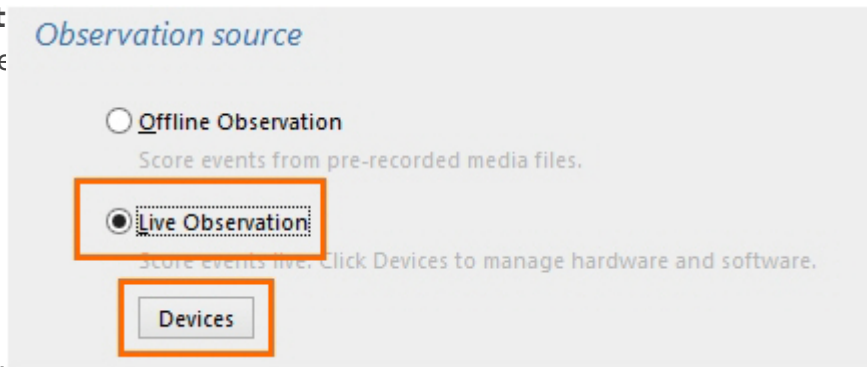
Procedure

1. In The Observer XT, choose **File > Preferences > N-Linx Settings**.
2. Select **Use N-Linx server to connect with other applications**.

The screenshot shows the 'Preferences' dialog box with the 'N-Linx settings' section selected in the left sidebar. The 'N-Linx settings' section is highlighted with an orange border. It contains a checked checkbox labeled 'Use N-Linx Server to connect with other applications'. Below this are two text input fields: 'N-Linx Server address' with the value 'localhost' and 'N-Linx Server port' with the value '5672'. A 'Test connection' button is located below the port field and is also highlighted with an orange border. At the bottom, the 'Status' field displays 'Not tested'.

3. In the **N-Linx Server address** field, enter the computer name of the computer with N-Linx server. If The Observer XT is installed on the same computer as N-Linx Server, leave the default entry Localhost.
4. In the **N-Linx Server port** field, leave the default port 5672. Ask your system administrator for assistance if this port is used by another program.
5. Click **Test connection**. If connection with N-Linx Server is found, the **Status** will change to **Connected**.
6. Click **OK**.

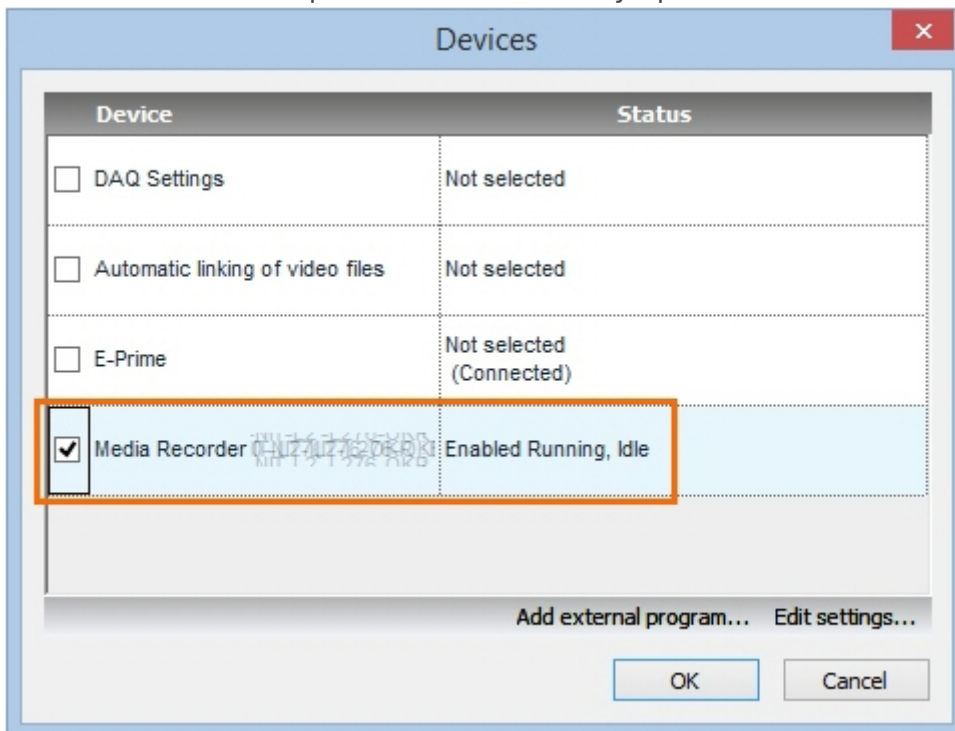
7. Choose **Setup > Project**
8. Under Observation source



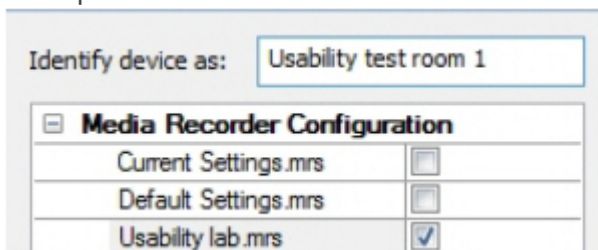
not,

click the **Devices** button.

9. Select **MediaRecorder [Version number][Computer name]** and click **Edit Settings**.
MediaRecorder now opens if it is not already open.



10. Click **Edit Settings** again. A window with the available configurations (see [Save the camera settings](#) in [Record video](#)) now opens. Select the configuration file you want to use and click **OK**. If you do not select a configuration, **Current Settings.mrs** will be used. Optionally enter a unique name in the **Identify device** as field. This way you can control multiple instances of MediaRecorder with one instance of The Observer XT.



1. Repeat the steps 9 and 10 for each MediaRecorder instance.

Note

When you close MediaRecorder, the MediaRecorder line in the **Devices** window (step 9) will be grayed out and the status will change to **Disabled**. MediaRecorder will start when you create an observation.

Revision #9

Created 29 November 2023 23:20:56

Updated 20 December 2023 13:47:09